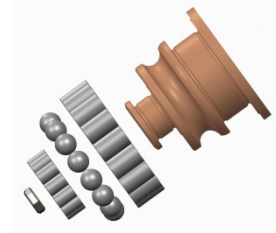
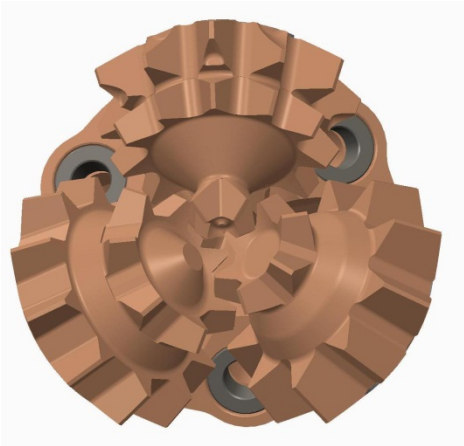


6 3/4" (1-1-1) (W5739)

Product specification



Product Features

- Conventional gage teeth
- 2/3rd shirrtail protection for soft and moderately abrasive formations

Product Specifications

Size / Type	6 3/4"	Cutting structure	ST
IADC	1-1-1	Rows	3- Gage / 5 – inner
Pin Connection	3 1/2" API Regular	Teeth count	33– Gage / 39- Inner
Bearing	Roller Ball Friction	Teeth Type	Straight
Circulation type	Centre Flush	Gage Protection	Hard facing
Product weight	16kg	Shirrtail protection	2/3 rd Hard facing
Nozzle	-NA-	Shirrtail insert	Serrated

Operating parameters

Weight on Bit : 6,500 – 20,000 lbs.
 Rotary Speed (RPM) : 70 –120 RPM
 Rock UCS : Between 2,500 to7,500 PSI

Operating parameters are typical ranges and may vary depending on ground conditions