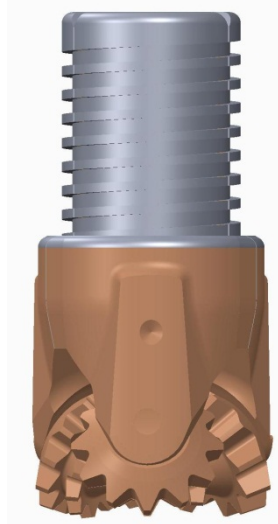
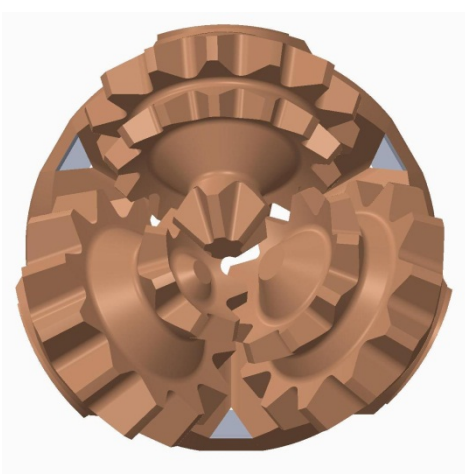


2 5/8" (3-2-1) (W5021)

Product specification



Product Features

- Conventional gage teeth
- Steel tooth standard open bearing bit for medium hard and moderately abrasive formations

Product Specifications

Size / Type	2 5/8"	Cutting structure	ST
IADC	3-2-1	Rows	3- Gage / 4 – inner
Pin Connection	N-rod" Thread	Teeth count	37– Gage / 34- Inner
Bearing	Ball Friction	Teeth Type	straight
Circulation type	Centre Flush	Gage Protection	Hard facing
Product weight	1.5kg	Shirttail protection	---
Nozzle	-NA-	Shirttail insert	---

Operating parameters

- Weight on Bit : 10,500 - 18,500 lbs
 Rotary Speed (RPM) : 60 – 80 RPM
 Rock UCS : Between 10,000 to 22,000 PSI

Operating parameters are typical ranges and may vary depending on ground conditions

Rev:00

Date: 28/04/2013

Approved By : kv